

## BRAMALEA RC Flying Club

**Operation Categories.** All categories of MAAC operations are permitted at the Club site (RPAS, Control Line, Free Flight, FPV and others); Activities at the field encompass flying, training, and testing on all categories of RPAS. Please ensure a copy of these rules are available while operating RPAS.

---

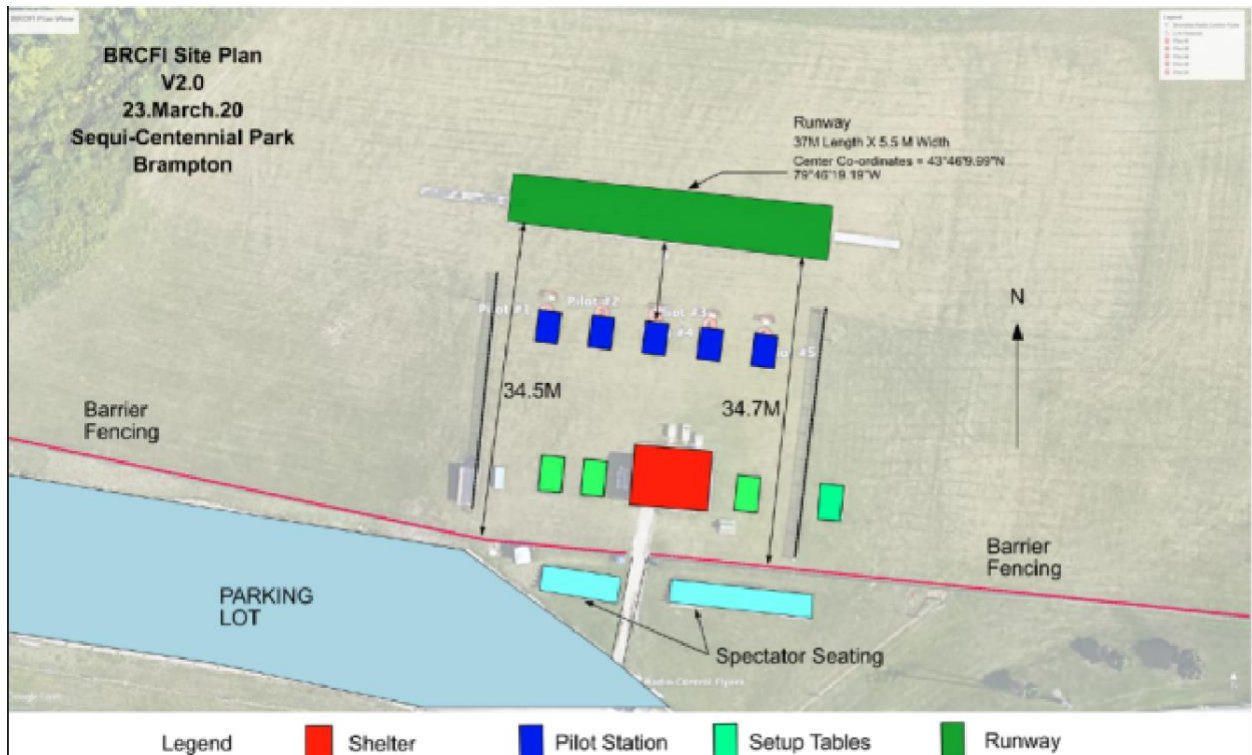
### BRCFI Flying and Safety Rules

1. All M.A.A.C. Safety Rules are to be followed. Should there be a conflict between these Club Safety Rules and the M.A.A.C. Safety Rules; the M.A.A.C. Safety Rules shall prevail. ([https://www.maac.ca/en/fly\\_with\\_us.php](https://www.maac.ca/en/fly_with_us.php))
2. All pilots are required to have a minimum basic RPAS certificate. This requirement was introduced in 2023 and will be updated as required. (<https://tc.canada.ca/en/aviation/drone-safety/drone-pilot-licensing/take-drone-pilot-online-exam-overview>)
3. All aircraft are required to have an identification tag affixed that includes pilots name, MAAC #, Phone # and TC serial # when applicable.
4. All Cars shall be parked in the provided parking lot or designated parking area away from the flying site.
5. Upon arrival at the flying field, all transmitters are to be placed in the impound. When the radio frequency you wish is clear, a proper channel tag, (as described in the section below) displaying you radio channel number with your current membership card and M.A.A.C. membership cards or copies thereof attached must be hanged on the appropriate location on the frequency board before the transmitter is retrieved from the impound and switched on.
6. No channel tags are needed for 2.4GHz or 5.6GHz transmitters.
7. Members' pre-flight activities shall take place in the designated pit area, and the following shall govern conduct in the pit area.
  - No engine shall be started in the pit area.
  - Prolonged running, or breaking in, of engines shall be accomplished in the designated area.
  - Spectators, for their own safety, are not permitted in the pit area.
  - A member may invite a visitor into the pit area for a specific reason, but the visitor must not remain for a prolonged period.
8. When a position on the flight line is available and you are ready to fly, secure (i.e.: tag) the appropriate frequency if applicable, and move into the ready area behind the flight stone for the proper engine starting procedures.
9. Rules of conduct when flying shall be as follows:
  - No aircraft shall be permitted to fly if it emits a sound level greater than 88dbA, (see note below), and, if required, all engines must be equipped with an efficient muffler system to achieve this requirement.  
Note: Noise levels will be enforced by use of the Club's sound level meter to determine output at a measured distance of 7 meters and 1 meter above the ground. The method of measurement shall be as prescribed by the Executive and all decisions relative to testing shall remain final.
  - A maximum of five pilot positions are available, designated by the spaced pads provided adjacent to the runway and pilots must stay in the pad area when flying.
  - Use of the runway by pilots or helpers, e.g. for viewing take-offs or retrieval of landed aircraft, shall be as brief as possible, and clearance to access runway must be obtained from pilots already flying.
  - All turns after take-off must be beyond the flight line and away from the pit area and be kept clear of restricted areas.
  - Flying is prohibited behind the flight line, or over the spectator and car park areas.

- Flying is not allowed over inhabited dwellings.
  - No aircraft, while in flight, shall fly closer to the pilot positions than the "flight line" which is clearly delineated on the runway.
10. A guest may be permitted to fly at the Club's facilities when accompanied by a current Club member; the guest must be in possession of a current M.A.A.C. membership card. Guest appearances must be limited and shall not interfere with the rights of Club members to fly.
  11. Safety and adherence to these resolutions is the responsibility of all Club members and as such must be enforced by all members. Continued violations must be brought to the attention of the Executive who are responsible to review and assess appropriate action, which may include suspension of or outright removal of Club rights and privileges from a member.

## **Pilot Certification**

All new pilots or new members must pass a Flight Evaluation Test. The test may be conducted by any instructor using the Club's Pilot Evaluation Report (last page of Member's Handbook). New pilots or new members will be issued a beginners membership card until they have successfully passed the test and until such time, a qualified pilot must monitor a beginner card member during any flights. The instructor will sign off the beginner membership card thus allowing full flight privileges. The completed Pilot Evaluation Report shall be submitted to the Club President who will then issue the full membership card.





**Bramalea RC Flyers Inc.**  
Pilot Station Locations

- Legend**
- 📍 Bramalea Christian Fellowship
  - 📍 Feature 1
  - 📍 G Photo Studio
  - 📍 LCBO
  - 📍 Line Measure
  - 📍 Sesqui-centennial Park



Google Earth  
© 2022 Google